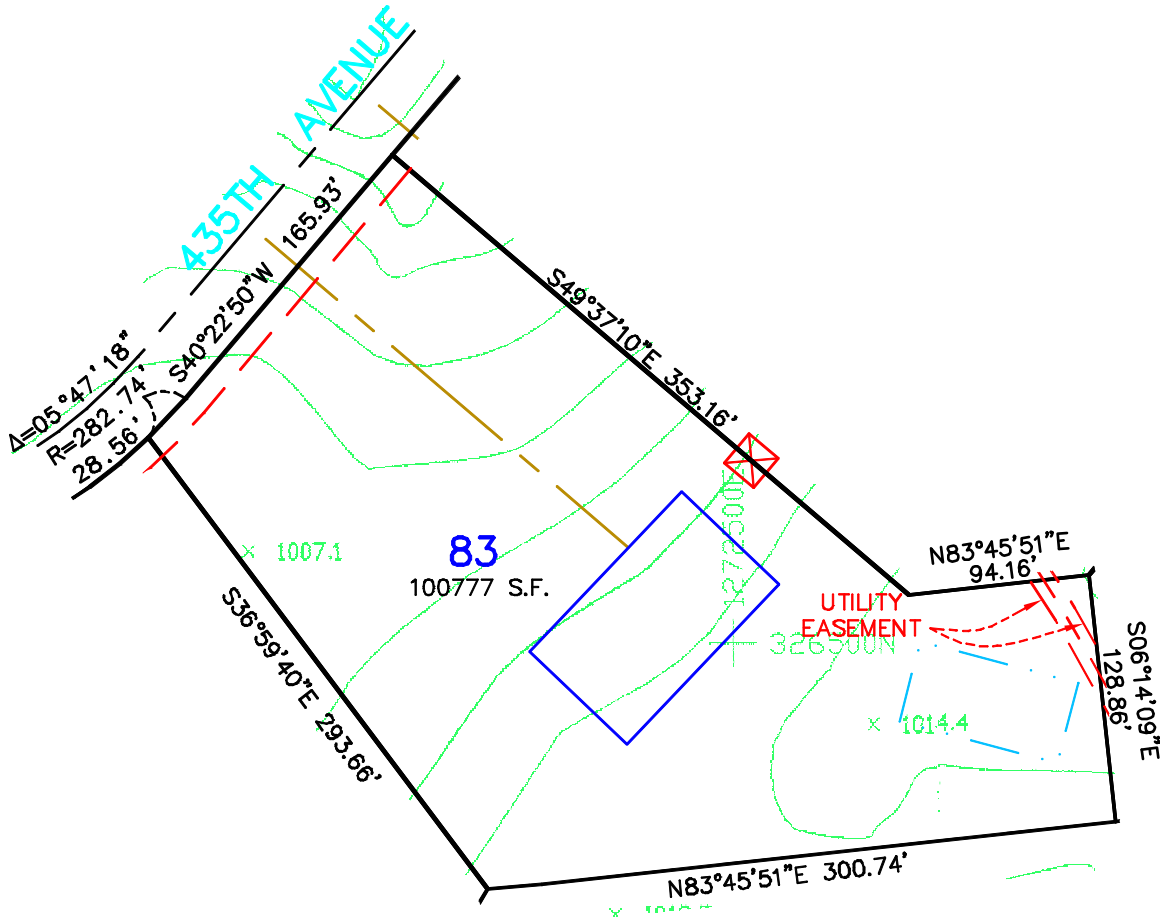
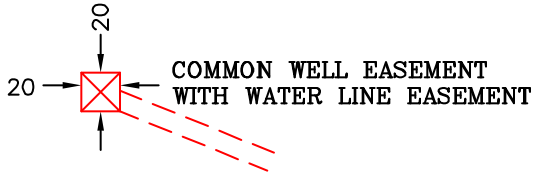


PROPOSED DRAIN FIELD

PROPOSED BUILDING PAD

CENTERLINE OF PROPOSED DRIVEWAY



0 100 200 300



Scale 1" = 100'

James R. Hill, Inc.
PLANNERS / ENGINEERS / SURVEYORS
2500 W. City Blvd., 4th. Suite 120, Roseville, MN 55137
PHONE: (652)980-6044 FAX: (652)980-6244



SKETCH OF
LOT 83, DIAMOND BLUFF
FOR: **DIAMOND BLUFF INVESTMENTS, L.L.C.**

DRAWN BY
CMH

DATE
2/24/03

REVISIONS

BOOK/PAGE
614/20

CONTROL FILE
20130C

CAD FILE
20130S10

PROJECT NO.
20130

FILE NO.
FOLDER

SHEET 1 OF 1