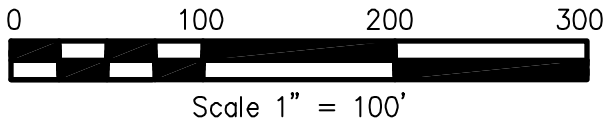
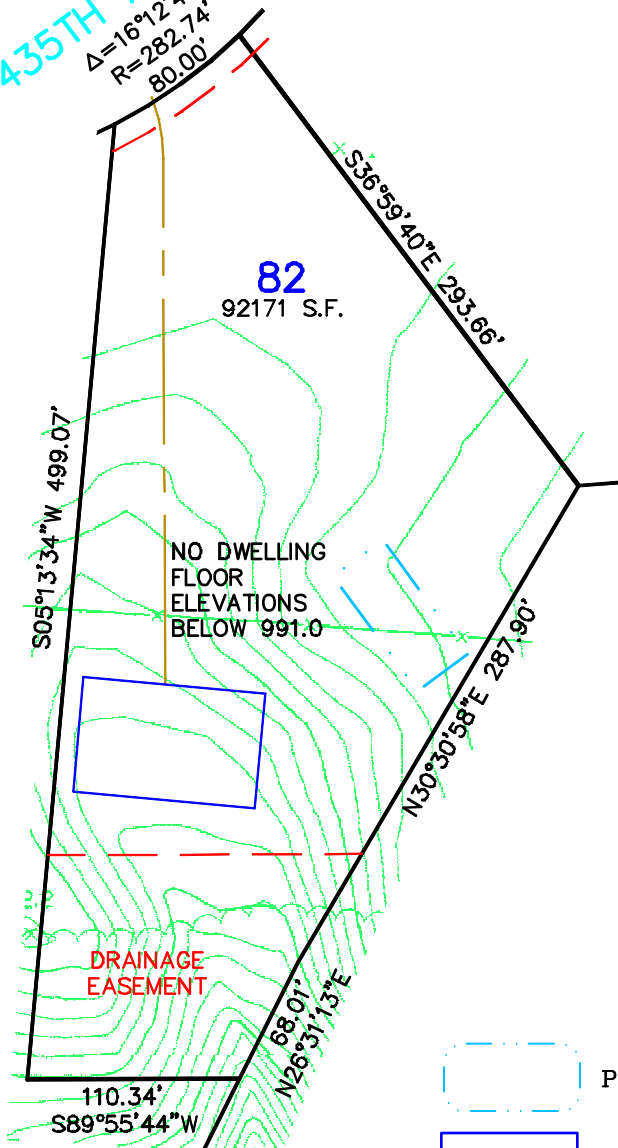


Not for construction purposes. Refer to the recorded plat of DIAMOND BLUFF for final plat information.

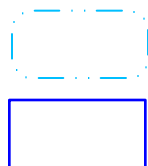


435TH AVENUE  
 $\Delta = 16^\circ 12' 42''$   
 $R = 282.74'$   
 $80.00'$



NO DWELLING  
 FLOOR  
 ELEVATIONS  
 BELOW 991.0

DRAINAGE  
 EASEMENT



PROPOSED DRAIN FIELD

PROPOSED BUILDING PAD

CENTERLINE OF PROPOSED  
 DRIVEWAY

COMMON WELL EASEMENT  
 WITH WATER LINE EASEMENT

**James R. Hill, Inc.**  
 PLANNERS / ENGINEERS / SURVEYORS  
 2500 W. CTV. RD. 42, SUITE 120, BROWNSVILLE, MN 55317  
 PHONE: (652)980-0014 FAX: (652)980-0244

SKETCH OF  
**LOT 82, DIAMOND BLUFF**  
 FOR: DIAMOND BLUFF INVESTMENTS, L.L.C.

<b>DRAWN BY</b>	CMH
<b>DATE</b>	2/21/03
<b>REVISIONS</b>	
<b>BOOK/PAGE</b>	614/20
<b>CONTROL FILE</b>	20130C
<b>CAD FILE</b>	20130S9
<b>PROJECT NO.</b>	20130
<b>FILE NO. FOLDER</b>	
<b>SHEET</b>	1 OF 1