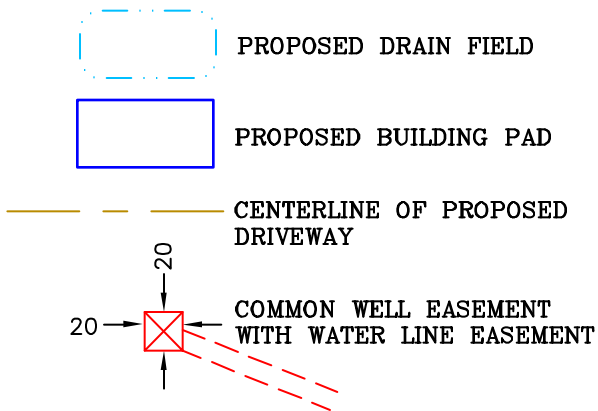
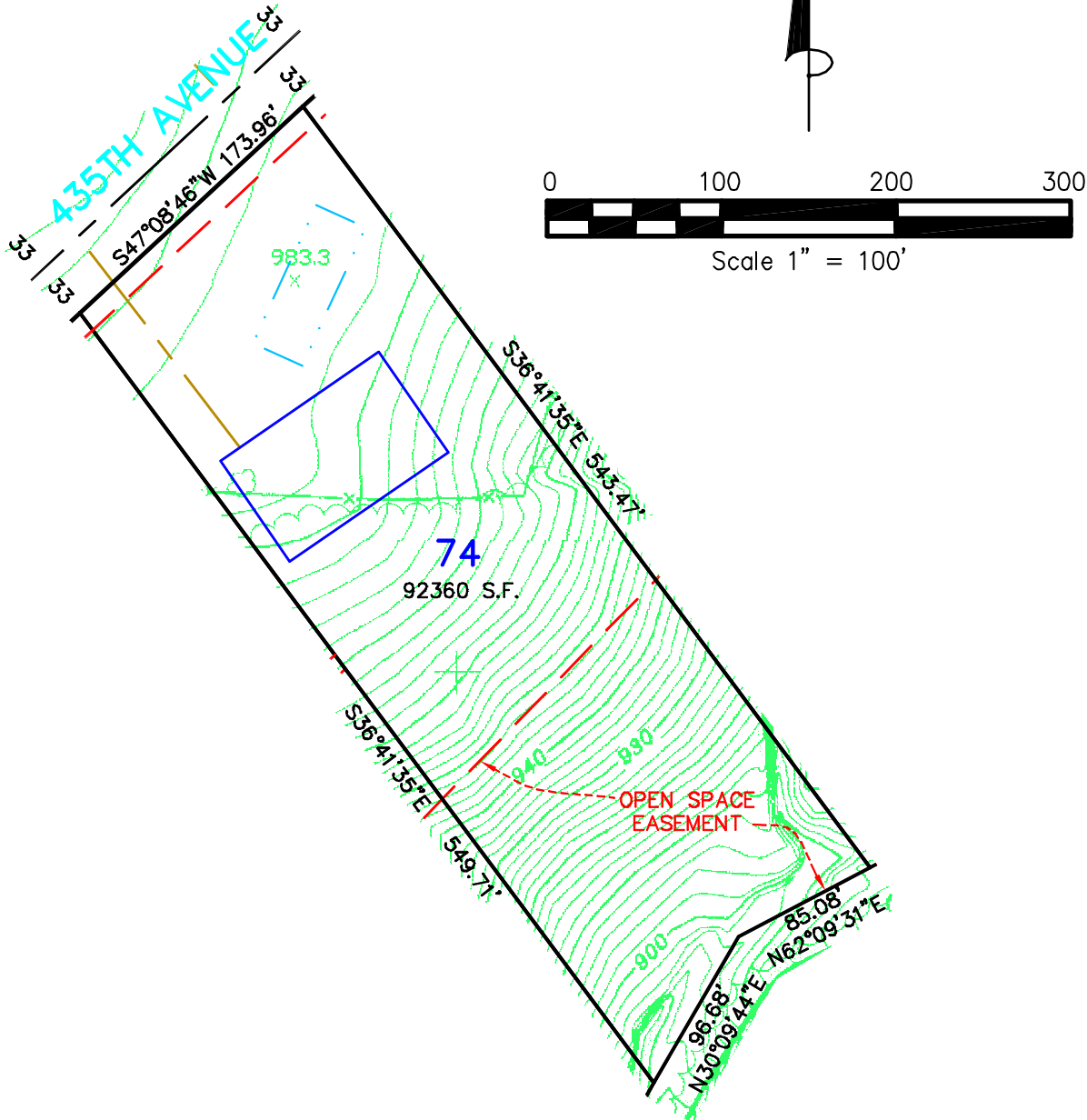


Not for construction purposes. Refer to the recorded plat of DIAMOND BLUFF for final plat information.



**James R. Hill, Inc.**  
 PLANNERS / ENGINEERS / SURVEYORS  
 2300 W. CTY. RD. 42, SUITE 120, BROWNSVILLE, MN 55337  
 PHONE: (652)980-0014 FAX: (652)980-0244

SKETCH OF  
**LOT 74, DIAMOND BLUFF**  
 FOR: DIAMOND BLUFF INVESTMENTS, L.L.C.

<b>DRAWN BY</b>	CMH
<b>DATE</b>	2/21/03
<b>REVISIONS</b>	
<b>BOOK/PAGE</b>	614/20
<b>CONTROL FILE</b>	20130C
<b>CAD FILE</b>	20130S9
<b>PROJECT NO.</b>	20130
<b>FILE NO. FOLDER</b>	
<b>SHEET</b>	1 OF 1