

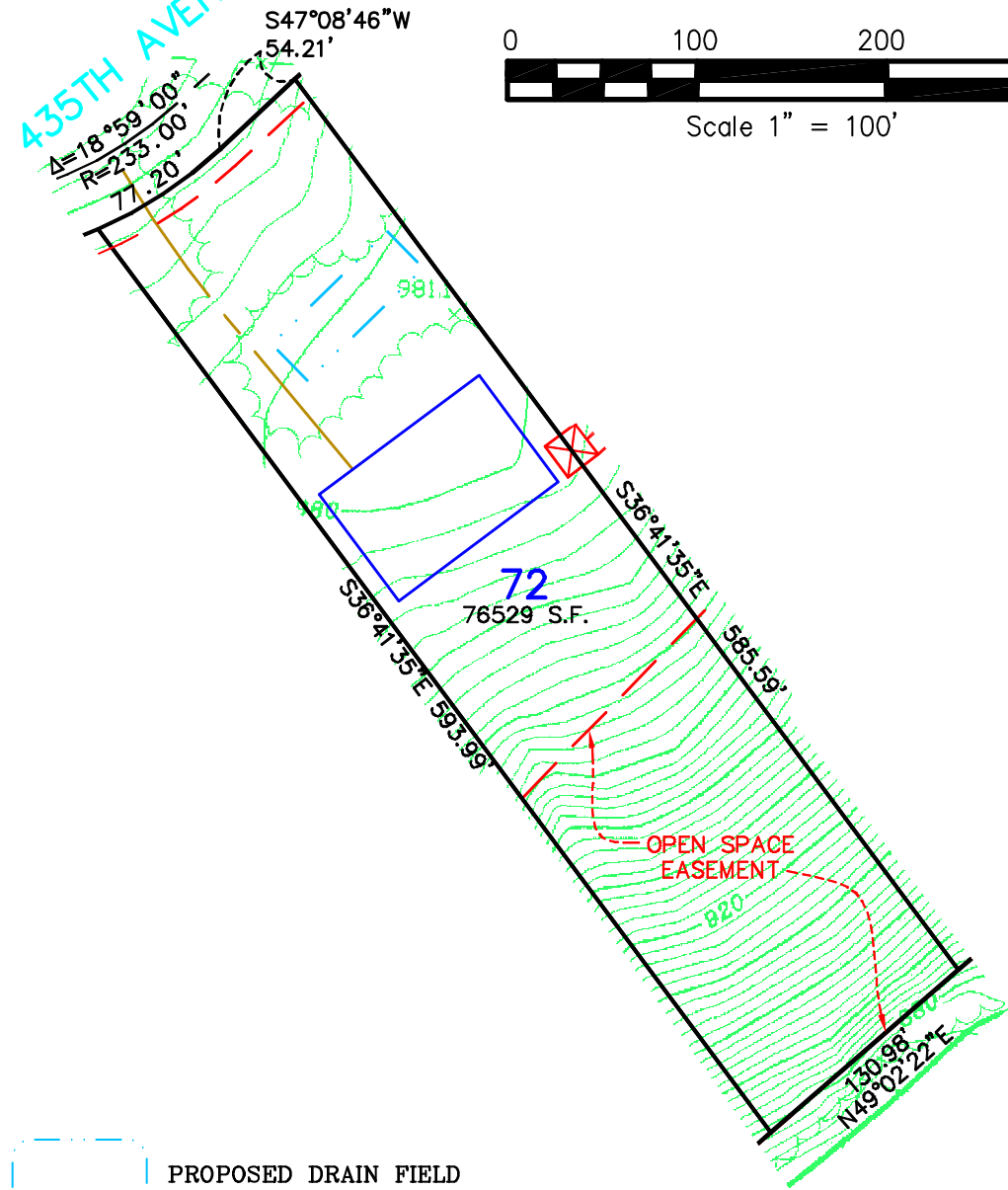
Not for construction purposes. Refer to the recorded plat of DIAMOND BLUFF for final plat information.

435TH AVENUE

$\Delta = 18^{\circ}59'00''$   
 $R = 233.00'$   
 $77.20'$   
 $S47^{\circ}08'46''W$   
 $54.21'$



Scale 1" = 100'

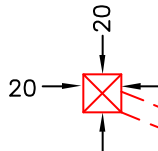


PROPOSED DRAIN FIELD



PROPOSED BUILDING PAD

--- CENTERLINE OF PROPOSED DRIVEWAY



COMMON WELL EASEMENT WITH WATER LINE EASEMENT

**James R. Hill, Inc.**  
 PLANNERS / ENGINEERS / SURVEYORS  
 2500 W. CTV. RD. #2, SUITE 120, BROWNSVILLE, MN 55317  
 PHONE: (652)980-0014 FAX: (652)980-0244

SKETCH OF  
**LOT 72, DIAMOND BLUFF**  
 FOR: DIAMOND BLUFF INVESTMENTS, L.L.C.

<b>DRAWN BY</b>	CMH
<b>DATE</b>	2/21/03
<b>REVISIONS</b>	
<b>BOOK/PAGE</b>	614/20
<b>CONTROL FILE</b>	20130C
<b>CAD FILE</b>	20130S9
<b>PROJECT NO.</b>	20130
<b>FILE NO. FOLDER</b>	
<b>SHEET</b>	1 OF 1