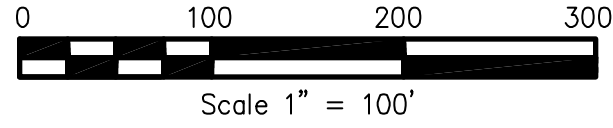
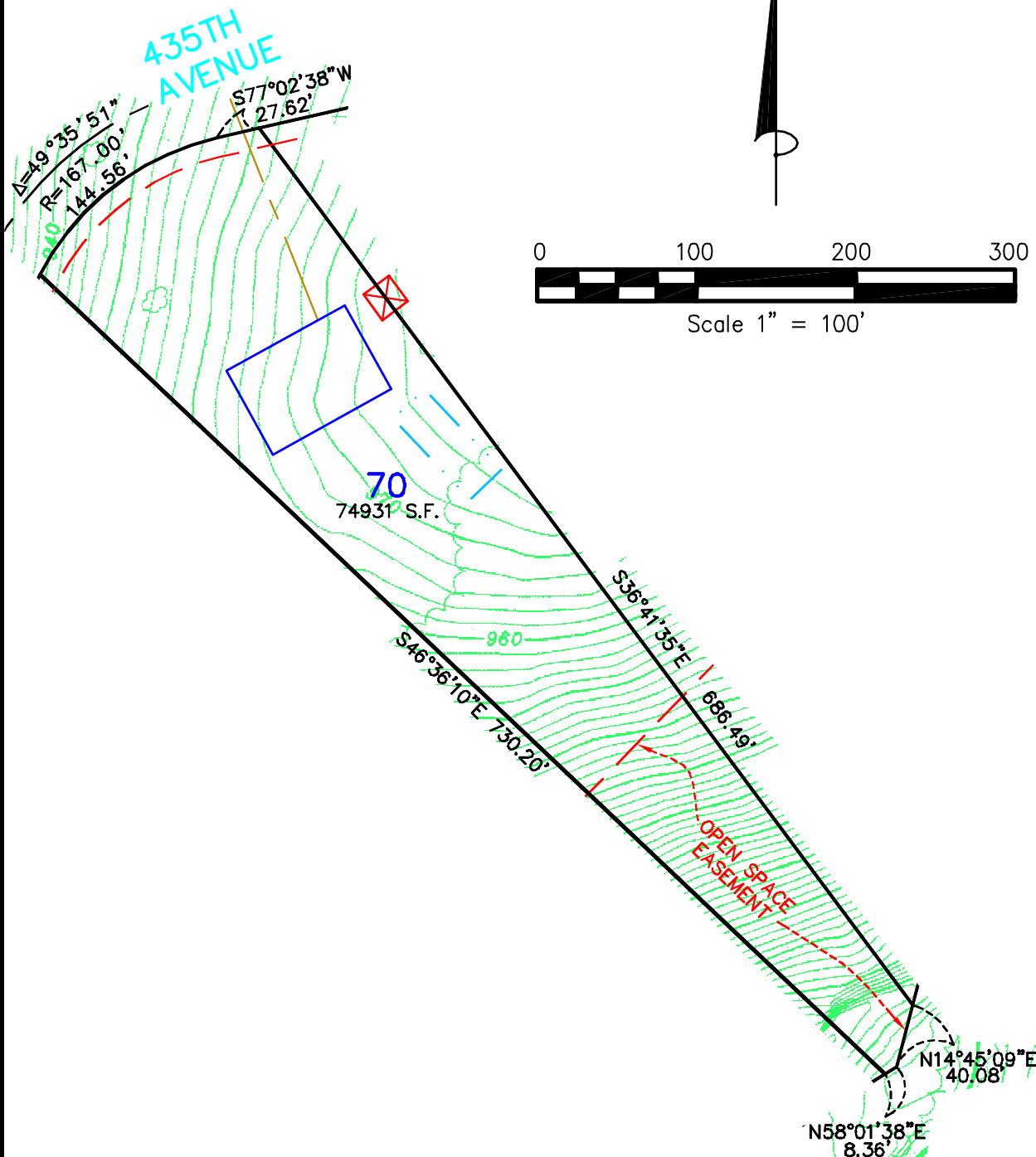


Not for construction purposes. Refer to the recorded plat of DIAMOND BLUFF for final plat information.



**James R. Hill, Inc.**  
 PLANNERS / ENGINEERS / SURVEYORS  
 2300 W. CTY. RD. #2, SUITE 120, BROWNSVILLE, MN 55337  
 PHONE: (652)980-0014 FAX: (652)980-0244

**SKETCH OF  
 LOT 70, DIAMOND BLUFF  
 FOR: DIAMOND BLUFF INVESTMENTS, L.L.C.**

<b>DRAWN BY</b> CMH
<b>DATE</b> 2/21/03
<b>REVISIONS</b>
<b>BOOK/PAGE</b> 614/20
<b>CONTROL FILE</b> 20130C
<b>CAD FILE</b> 20130S9
<b>PROJECT NO.</b> 20130
<b>FILE NO.</b> FOLDER
<b>SHEET 1 OF 1</b>

- PROPOSED DRAIN FIELD
- PROPOSED BUILDING PAD
- CENTERLINE OF PROPOSED DRIVEWAY
- COMMON WELL EASEMENT WITH WATER LINE EASEMENT