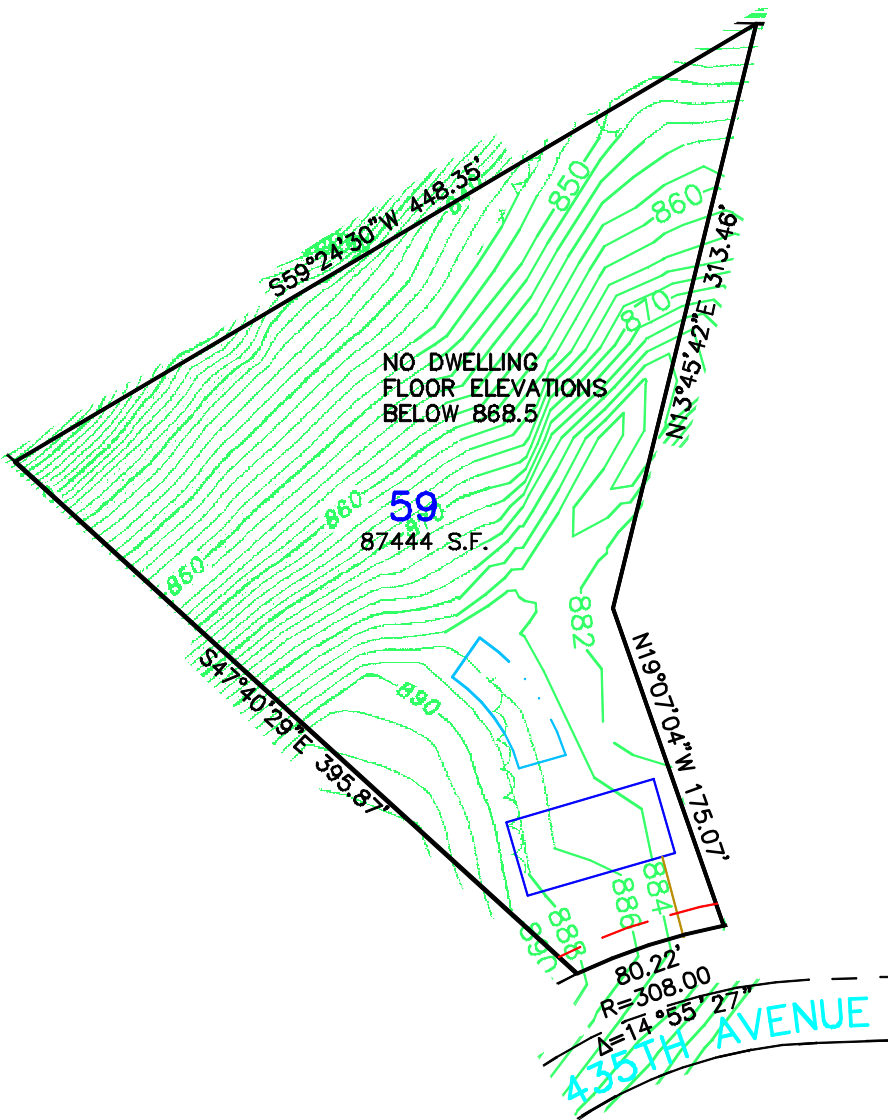
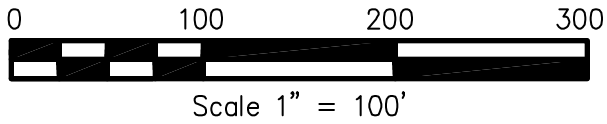


Not for construction purposes. Refer to the recorded plat of DIAMOND BLUFF for final plat information.



SHEET 1 OF 1	DRAWN BY	REVISIONS	BOOK/PAGE
	CHH		614/20
FILE NO. FOLDER	DATE		CONTROL FILE
20130	2/20/03		20130C
PROJECT NO.			CAD FILE
201309			20130S9

**SKETCH OF
LOT 59, DIAMOND BLUFF
FOR: DIAMOND BLUFF INVESTMENTS, L.L.C.**

James R. Hill, Inc.
 PLANNERS / ENGINEERS / SURVEYORS
 2500 W. Cty. Rd. 42, Suite 120, Burnsville, MN 55337
 PHONE: (952)890-6044 FAX: (952)890-6244