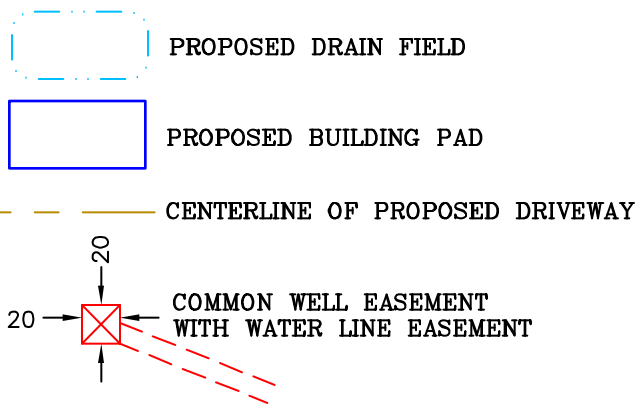
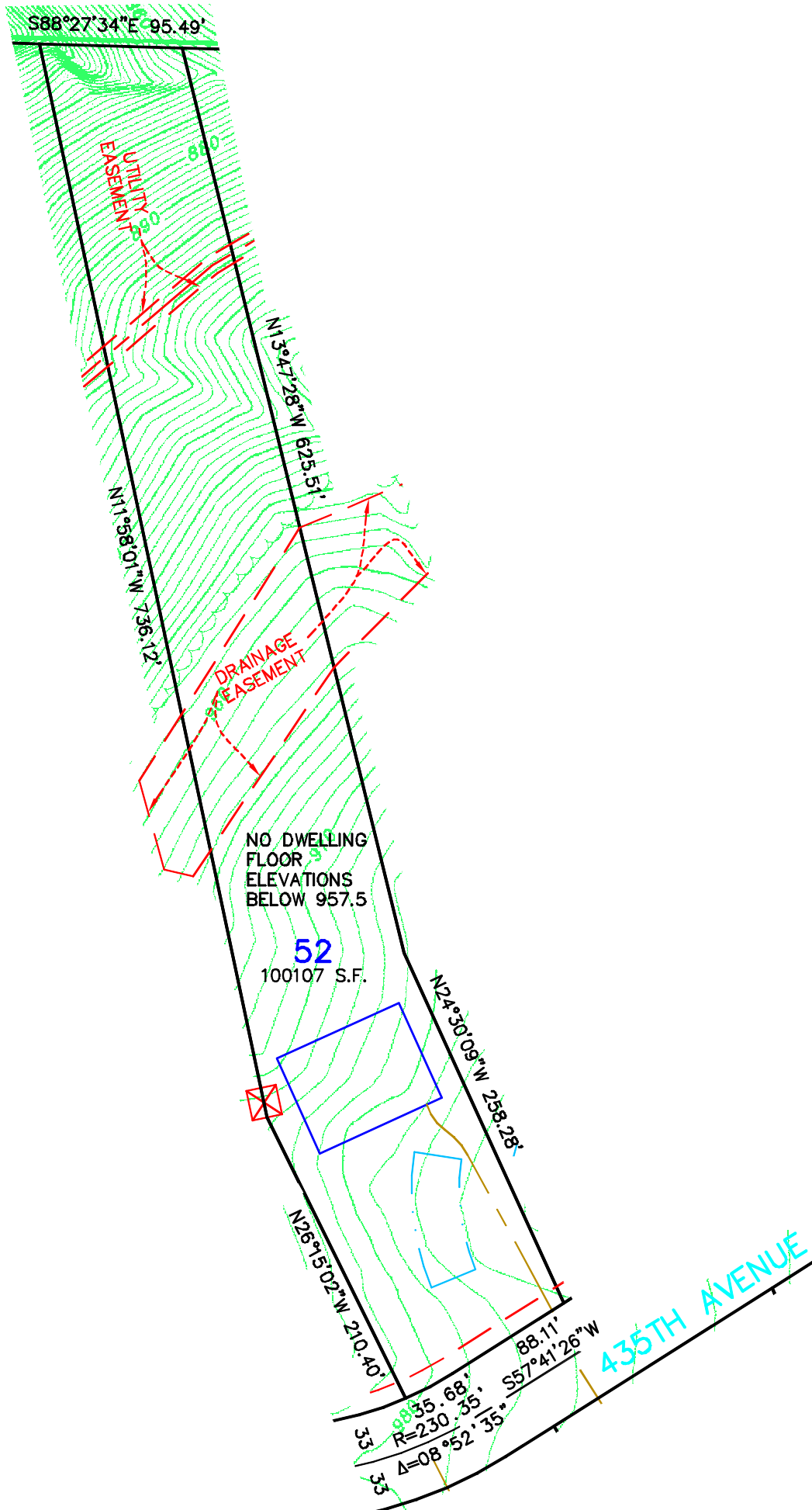
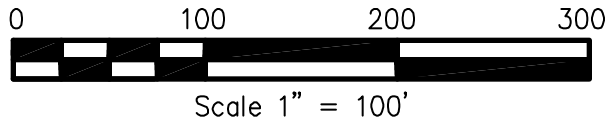


Not for construction purposes. Refer to the recorded plat of DIAMOND BLUFF for final plat information.



**James R. Hill, Inc.**  
 PLANNERS / ENGINEERS / SURVEYORS  
 2500 W. Cty. Rd. 42, Suite 120, Burnsville, MN 55337  
 PHONE: (952)890-6044 FAX: (952)890-6244

SKETCH OF  
**LOT 52, DIAMOND BLUFF**  
 FOR: DIAMOND BLUFF INVESTMENTS, L.L.C.

<b>DRAWN BY</b> CMH
<b>DATE</b> 2/25/03
<b>REVISIONS</b>
<b>BOOK/PAGE</b> 614/20
<b>CONTROL NO.</b> 20130C
<b>CAD FILE</b> 20130S11
<b>PROJECT NO.</b> 20130
<b>FILE NO.</b> FOLDER
<b>SHEET 1 OF 1</b>