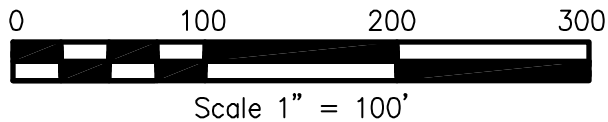
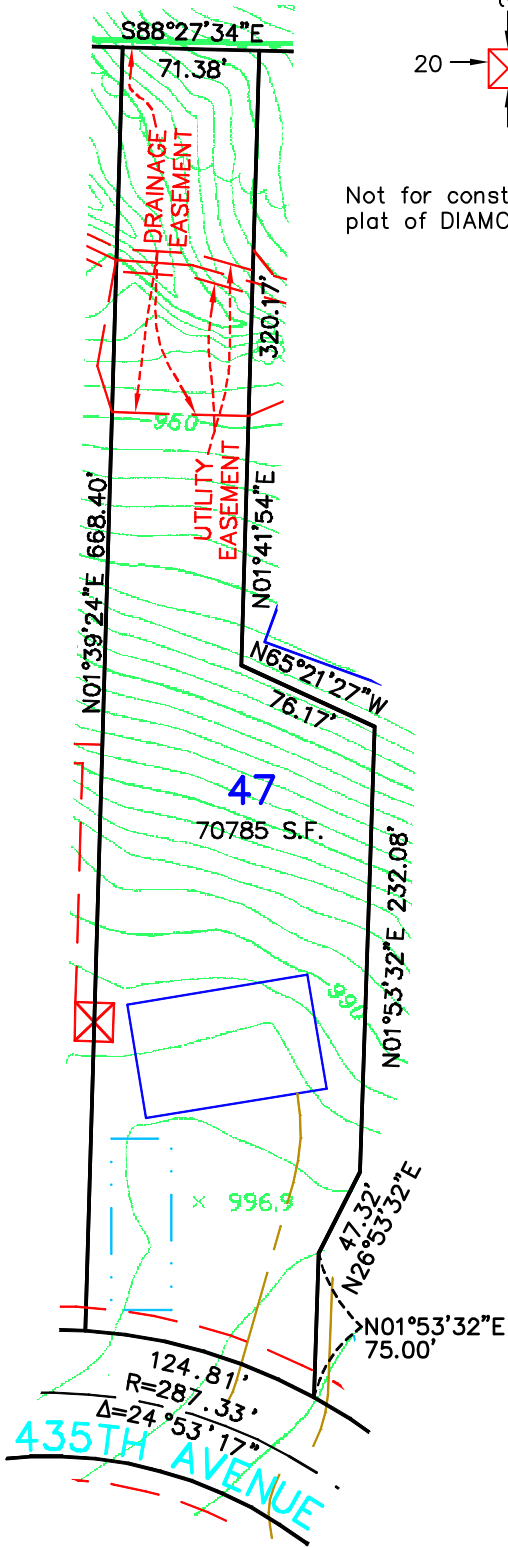


Not for construction purposes. Refer to the recorded plat of DIAMOND BLUFF for final plat information.



**James R. Hill, Inc.**  
 PLANNERS / ENGINEERS / SURVEYORS  
 250 W. Ctr. Rd. 42, Suite 120, Barrabess, WI, 53317  
 PHONE: (623)800-0044 FAX: (623)800-6244

SKETCH OF  
**LOT 47, DIAMOND BLUFF**  
 FOR: DIAMOND BLUFF INVESTMENTS, L.L.C.

DRAWN BY	CMH
DATE	2/25/03
REVISIONS	
BOOK/PAGE	614/20
CONTROL FILE	20130C
CAD FILE	20130S12
PROJECT NO.	20130
FILE NO. FOLDER	
SHEET 1 OF 1	