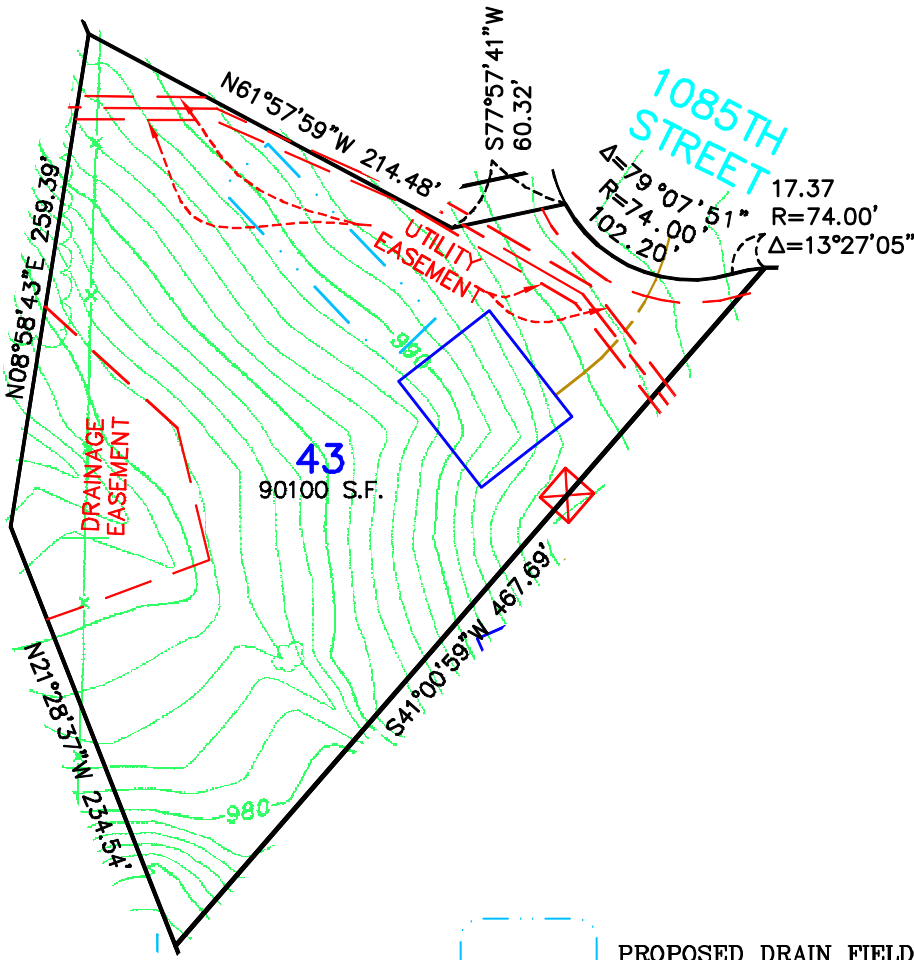


Not for construction purposes. Refer to the recorded plat of DIAMOND BLUFF for final plat information.



Scale 1" = 100'



- PROPOSED DRAIN FIELD
- PROPOSED BUILDING PAD
- CENTERLINE OF PROPOSED DRIVEWAY
- COMMON WELL EASEMENT WITH WATER LINE EASEMENT

James R. Hill, Inc.
 PLANNERS / ENGINEERS / SURVEYORS
 2500 W. City Blvd., 42, Suite 120, Roseville, MN 55127
 PHONE: (652)980-6044 FAX: (652)980-6244

**SKETCH OF
 LOT 43, DIAMOND BLUFF
 FOR: DIAMOND BLUFF INVESTMENTS, L.L.C.**

DRAWN BY CMH
DATE 2/25/03
REVISIONS
BOOK/PAGE 614/20
CONTROL FILE 20130C
CAD FILE 20130S11
PROJECT NO. 20130
FILE NO. FOLDER
SHEET 1 OF 1