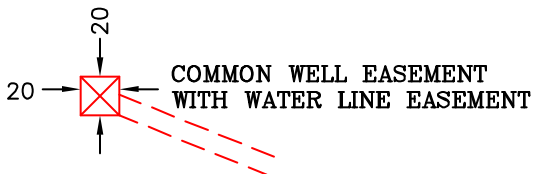
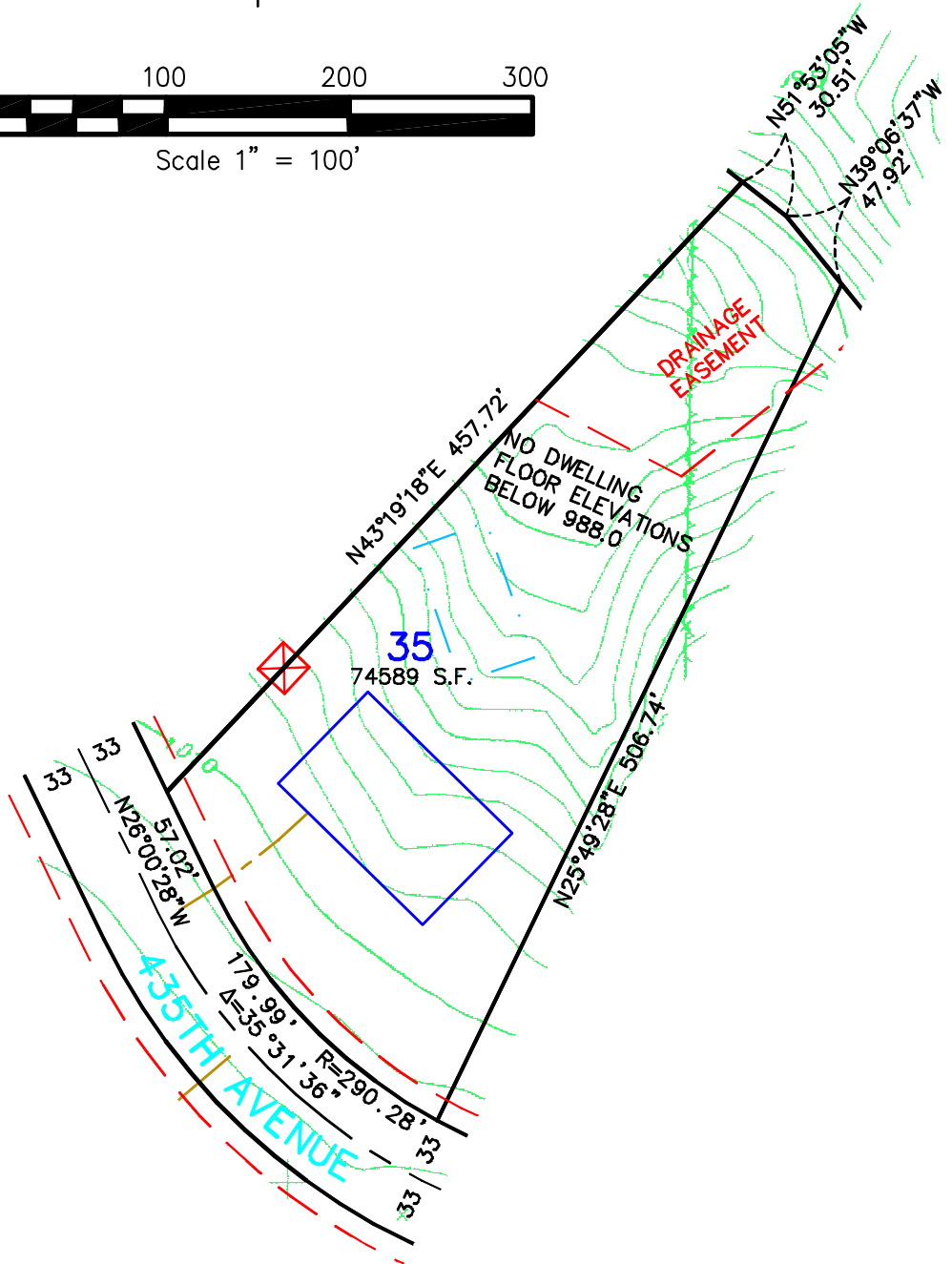


Not for construction purposes. Refer to the recorded plat of DIAMOND BLUFF for final plat information.



Scale 1" = 100'



- PROPOSED DRAIN FIELD
- PROPOSED BUILDING PAD
- CENTERLINE OF PROPOSED DRIVEWAY

James R. Hill, Inc.
 PLANNERS / ENGINEERS / SURVEYORS
 2300 W. CTY. RD. 42, SUITE 120, BROWNSVILLE, MN 55337
 PHONE: (652)980-0014 FAX: (652)980-0244

SKETCH OF
LOT 35, DIAMOND BLUFF
 FOR: DIAMOND BLUFF INVESTMENTS, L.L.C.

DRAWN BY CMH
DATE 2/21/03
REVISIONS
BOOK/PAGE 614/20
CONTROL FILE 20130C
CAD FILE 20130S9
PROJECT NO. 20130
FILE NO. FOLDER
SHEET 1 OF 1