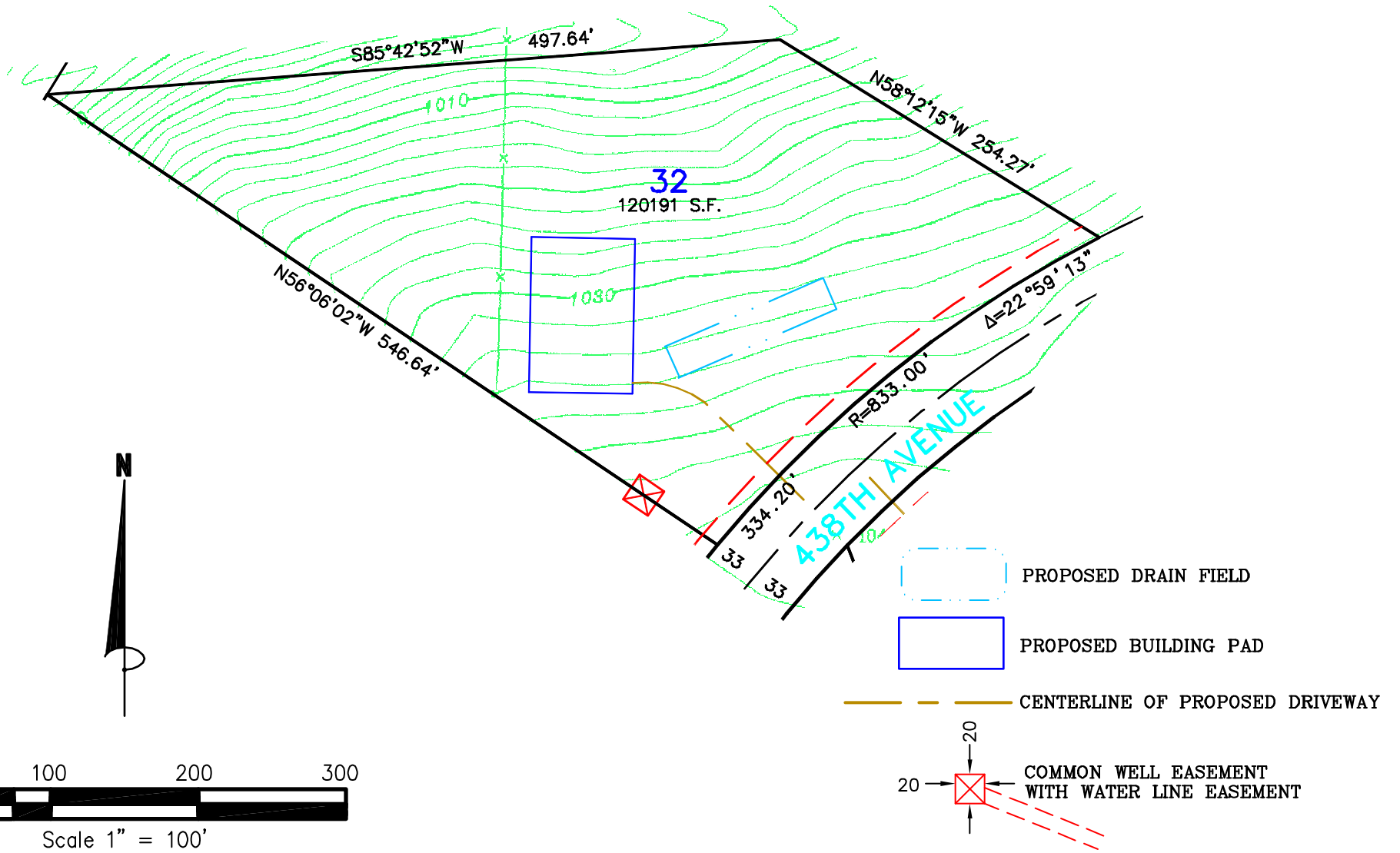



Not for construction purposes. Refer to the recorded plat of DIAMOND BLUFF for final plat information.



|              |                 |                   |                   |                     |                  |              |              |
|--------------|-----------------|-------------------|-------------------|---------------------|------------------|--------------|--------------|
| SHEET 1 OF 1 | FILE NO. FOLDER | PROJECT NO. 20130 | CAD FILE 20130S10 | CONTROL FILE 20130C | BOOK/PAGE 614/20 | REVISIONS    | DRAWN BY CAH |
|              |                 |                   |                   |                     |                  | DATE 2/24/03 |              |

**SKETCH OF  
LOT 32, DIAMOND BLUFF  
FOR: DIAMOND BLUFF INVESTMENTS, L.L.C.**



**James R. Hill, Inc.**  
 PLANNERS / ENGINEERS / SURVEYORS  
 2500 W. Cty. Rd. 42, Suite 120, Burnsville, MN 55337  
 PHONE: (952)890-6044 FAX: (952)890-6244