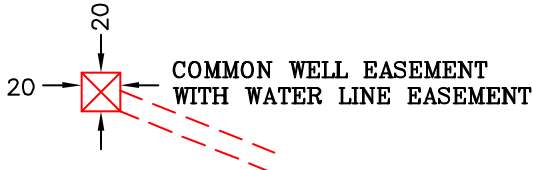


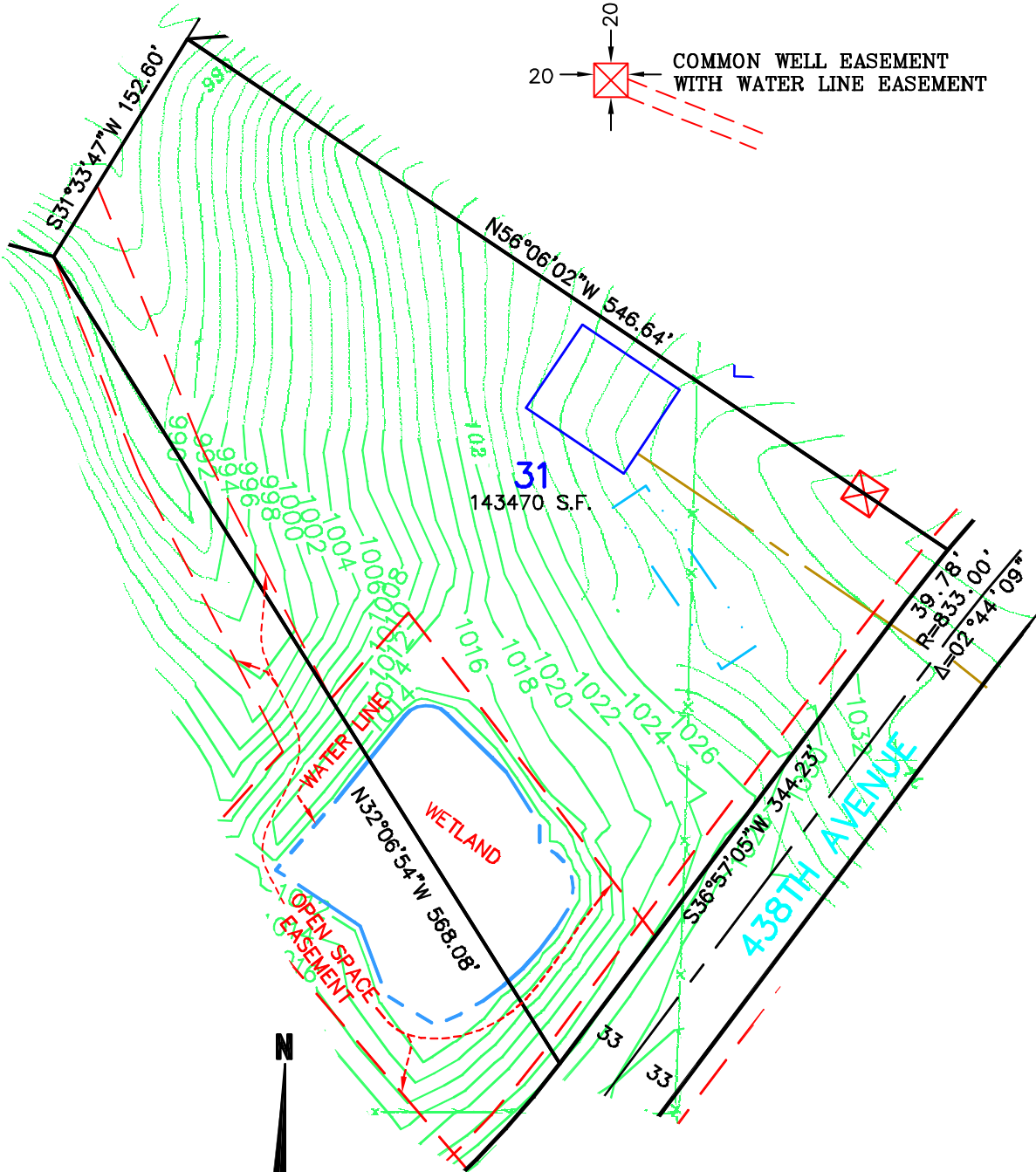
PROPOSED DRAIN FIELD

PROPOSED BUILDING PAD

CENTERLINE OF PROPOSED DRIVEWAY



COMMON WELL EASEMENT WITH WATER LINE EASEMENT



31
143470 S.F.



Scale 1" = 100'

Not for construction purposes. Refer to the recorded plat of DIAMOND BLUFF for final plat information.

James R. Hill, Inc.
 PLANNERS / ENGINEERS / SURVEYORS
 2500 W. City Blvd., 42, Suite 120, Roseville, MN 55137
 PHONE: (652)960-6044 FAX: (652)960-6244

SKETCH OF
LOT 31, DIAMOND BLUFF
 FOR: DIAMOND BLUFF INVESTMENTS, L.L.C.

DRAWN BY CMH
DATE 2/25/03
REVISIONS
BOOK/PAGE 614/20
CONTROL FILE 20130C
CAD FILE 20130S11
PROJECT NO. 20130
FILE NO. FOLDER
SHEET 1 OF 1