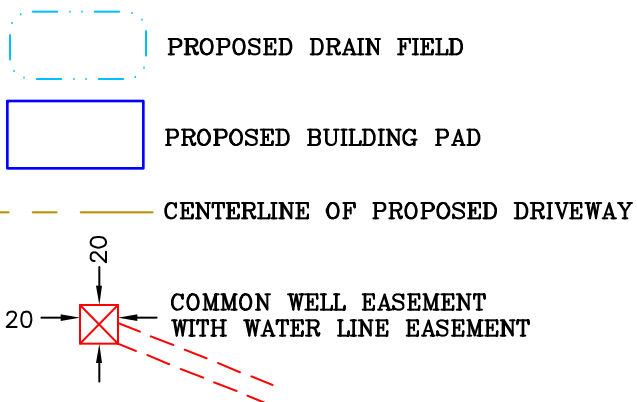
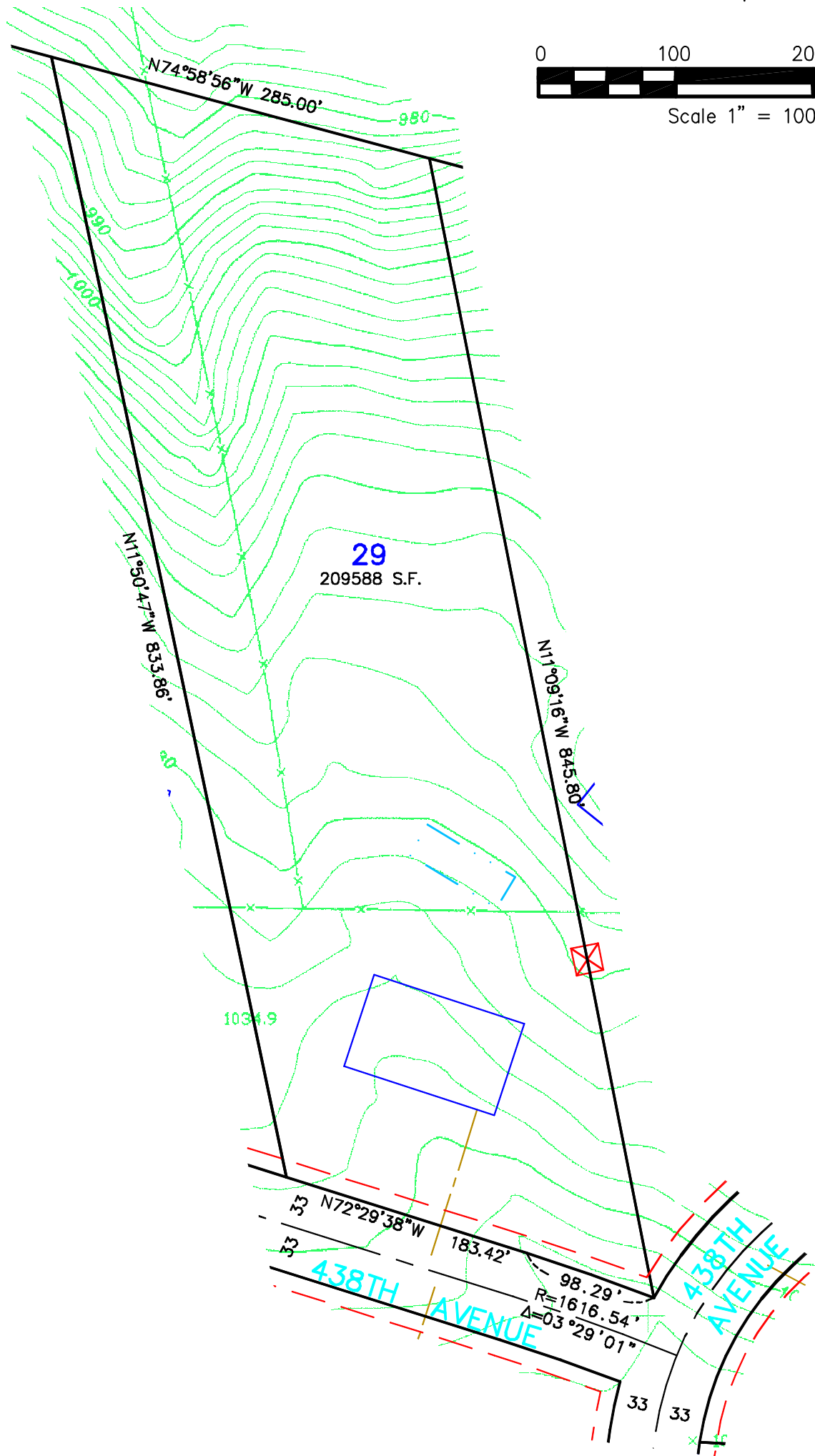
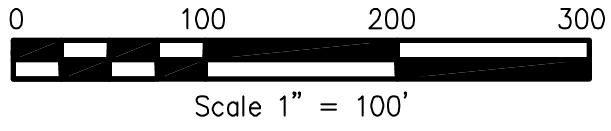


Not for construction purposes. Refer to the recorded plat of DIAMOND BLUFF for final plat information.



James R. Hill, Inc.
 PLANNERS / ENGINEERS / SURVEYORS
 2500 W. Cty. Rd. 42, Suite 120, Burnsville, MN 55337
 PHONE: (952)890-6044 FAX: (952)890-6244

SKETCH OF
LOT 29, DIAMOND BLUFF
 FOR: **DIAMOND BLUFF INVESTMENTS, L.L.C.**

DRAWN BY CMH
DATE 2/25/03
REVISIONS
BOOK/PAGE 614/20
CONTROL NO. 20130C
CAD FILE 20130S11
PROJECT NO. 20130
FILE NO. FOLDER
SHEET 1 OF 1