

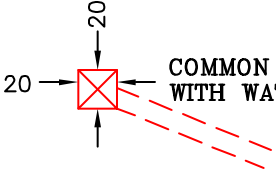


PROPOSED DRAIN FIELD



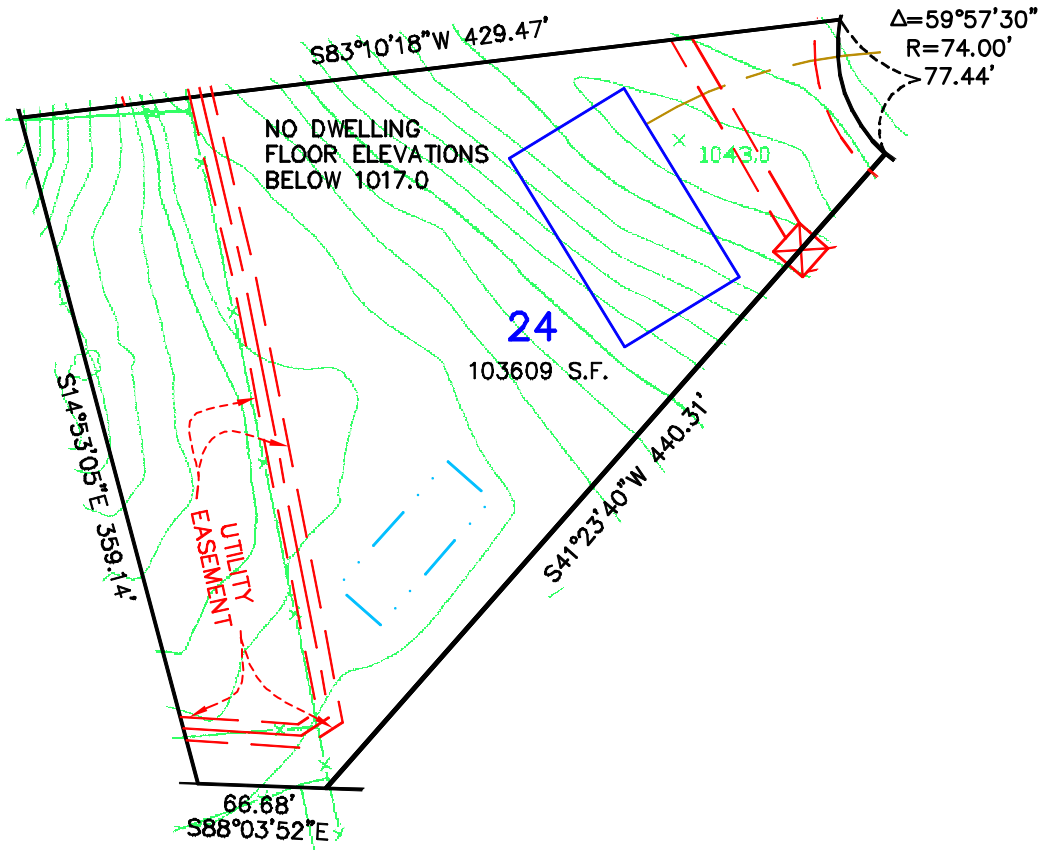
PROPOSED BUILDING PAD

--- CENTERLINE OF PROPOSED DRIVEWAY



COMMON WELL EASEMENT WITH WATER LINE EASEMENT

1069TH STREET




Scale 1" = 100'

Not for construction purposes. Refer to the recorded plat of DIAMOND BLUFF for final plat information.

DRAWN BY	CMH
DATE	2/20/03
REVISIONS	
BOOK/PAGE	614/20
CONTROL FILE	20130C
CAD FILE	20130S9
PROJECT NO.	20130
FILE NO.	
FOLDER	
SHEET	1 OF 1

**SKETCH OF
LOT 24, DIAMOND BLUFF
FOR: DIAMOND BLUFF INVESTMENTS, L.L.C.**



James R. Hill, Inc.
 PLANNERS / ENGINEERS / SURVEYORS
 2500 M. Cty. Rd. 42, Suite 120, Burnsville, MN 55337
 PHONE: (952)890-6044 FAX: (952)890-6244