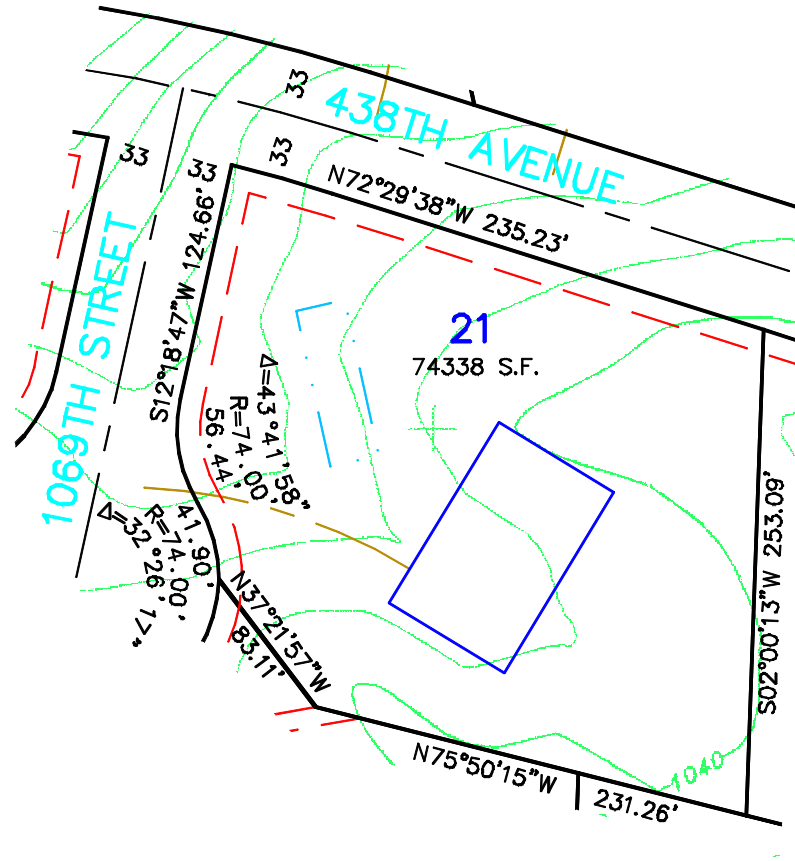
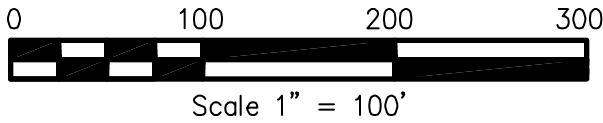
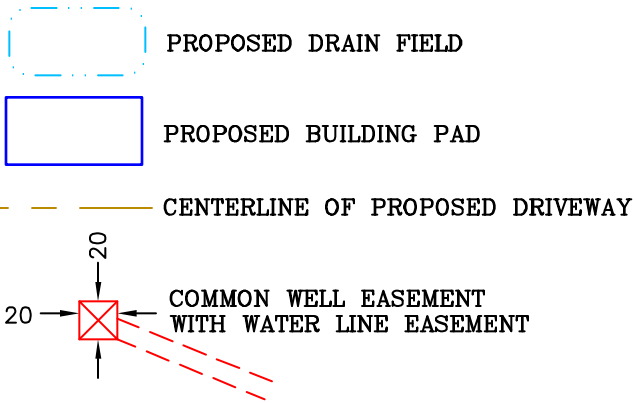


Not for construction purposes. Refer to the recorded plat of DIAMOND BLUFF for final plat information.



SHEET 1 OF 1	FILE NO. FOLDER	PROJECT NO. 20130	CAD FILE 20130S9	CONTROL FILE 20130C	BOOK/PAGE 614/20	REVISIONS	DATE 2/20/03	DRAWN BY CMH
--------------	-----------------	-------------------	------------------	---------------------	------------------	-----------	--------------	--------------

**SKETCH OF
LOT 21, DIAMOND BLUFF
FOR: DIAMOND BLUFF INVESTMENTS, L.L.C.**

James R. Hill, Inc.
 PLANNERS / ENGINEERS / SURVEYORS
 2500 W. Cty. Rd. 42, Suite 120, Burnsville, MN 55337
 PHONE: (952)890-8044 FAX: (952)890-8244