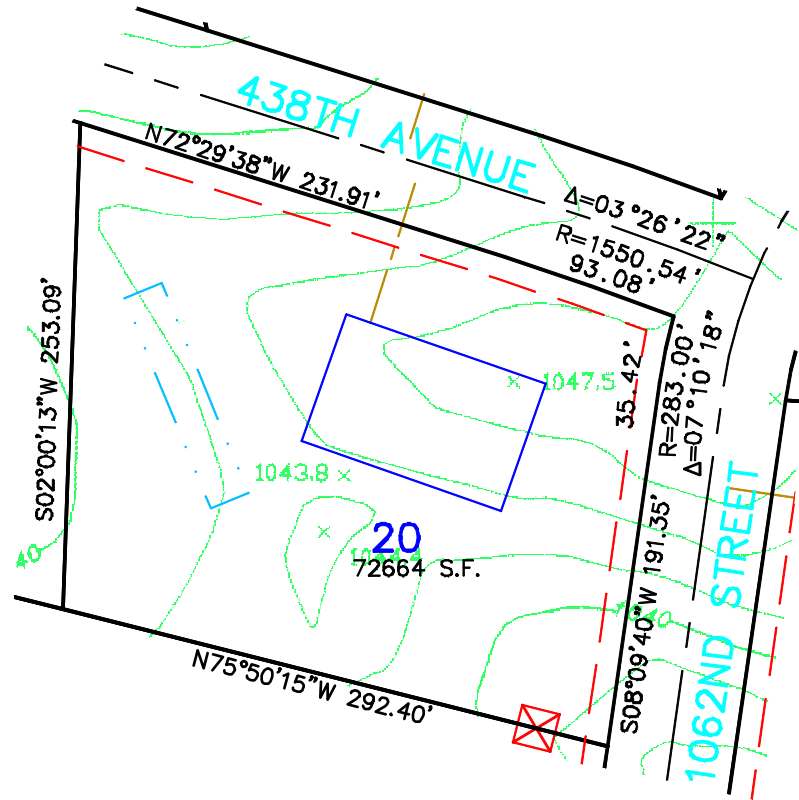
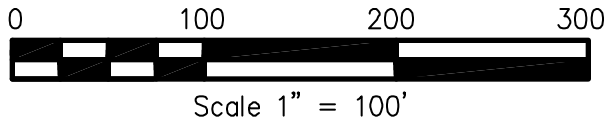
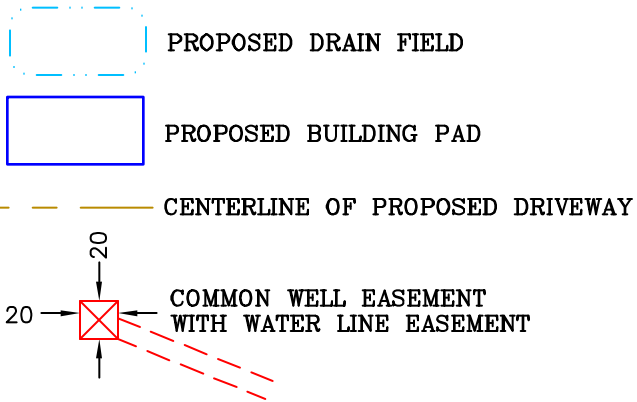


Not for construction purposes. Refer to the recorded plat of DIAMOND BLUFF for final plat information.



DRAWN BY CMH	DATE 2/24/03	REVISIONS	BOOK/PAGE 614/20	CONTROL FILE 20130C	CAD FILE 20130S10	PROJECT NO. 20130	FILE NO. FOLDER	SHEET 1 OF 1
-----------------	-----------------	-----------	---------------------	------------------------	----------------------	----------------------	--------------------	--------------

**SKETCH OF
LOT 20, DIAMOND BLUFF
FOR: DIAMOND BLUFF INVESTMENTS, L.L.C.**

James R. Hill, Inc.
 PLANNERS / ENGINEERS / SURVEYORS
 2500 W. Cty. Rd. 42, Suite 120, Burnsville, MN 55337
 PHONE: (952)890-8044 FAX: (952)890-8244