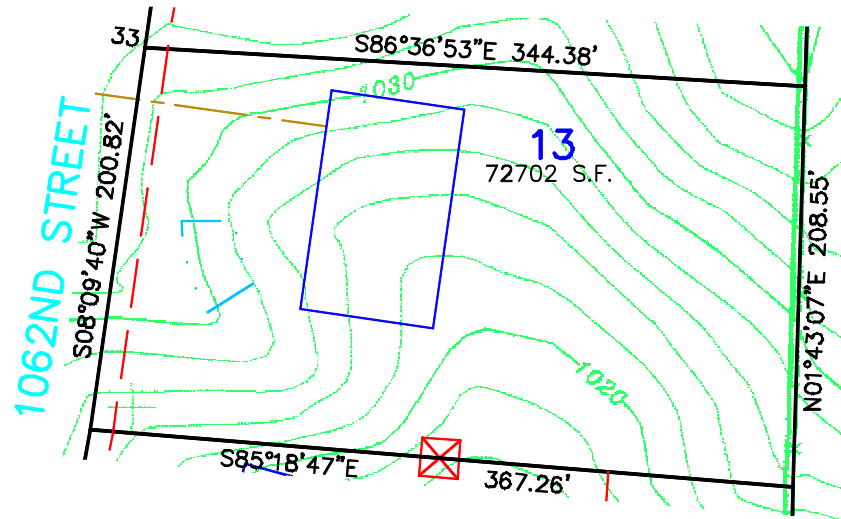
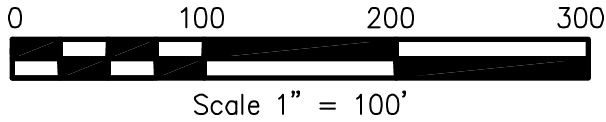


Not for construction purposes. Refer to the recorded plat of DIAMOND BLUFF for final plat information.

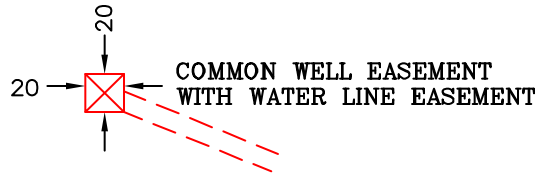


PROPOSED DRAIN FIELD




PROPOSED BUILDING PAD

--- CENTERLINE OF PROPOSED DRIVEWAY



DRAWN BY GMH	DATE 2/24/03	REVISIONS	BOOK/PAGE 614/20	CONTROL FILE 20130C	CAD FILE 20130510	PROJECT NO. 20130	FILE NO. FOLDER	SHEET 1 OF 1
-----------------	-----------------	-----------	---------------------	------------------------	----------------------	----------------------	--------------------	--------------

**SKETCH OF  
LOT 13, DIAMOND BLUFF  
FOR: DIAMOND BLUFF INVESTMENTS, L.L.C.**



**James R. Hill, Inc.**  
**PLANNERS / ENGINEERS / SURVEYORS**  
 2500 W. Cty. Rd. 42, Suite 120, Burnsville, MN 55337  
 PHONE: (952)890-6044 FAX: (952)890-6244