

Not for construction purposes. Refer to the recorded plat of DIAMOND BLUFF for final plat information.

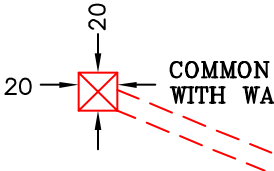


PROPOSED DRAIN FIELD



PROPOSED BUILDING PAD

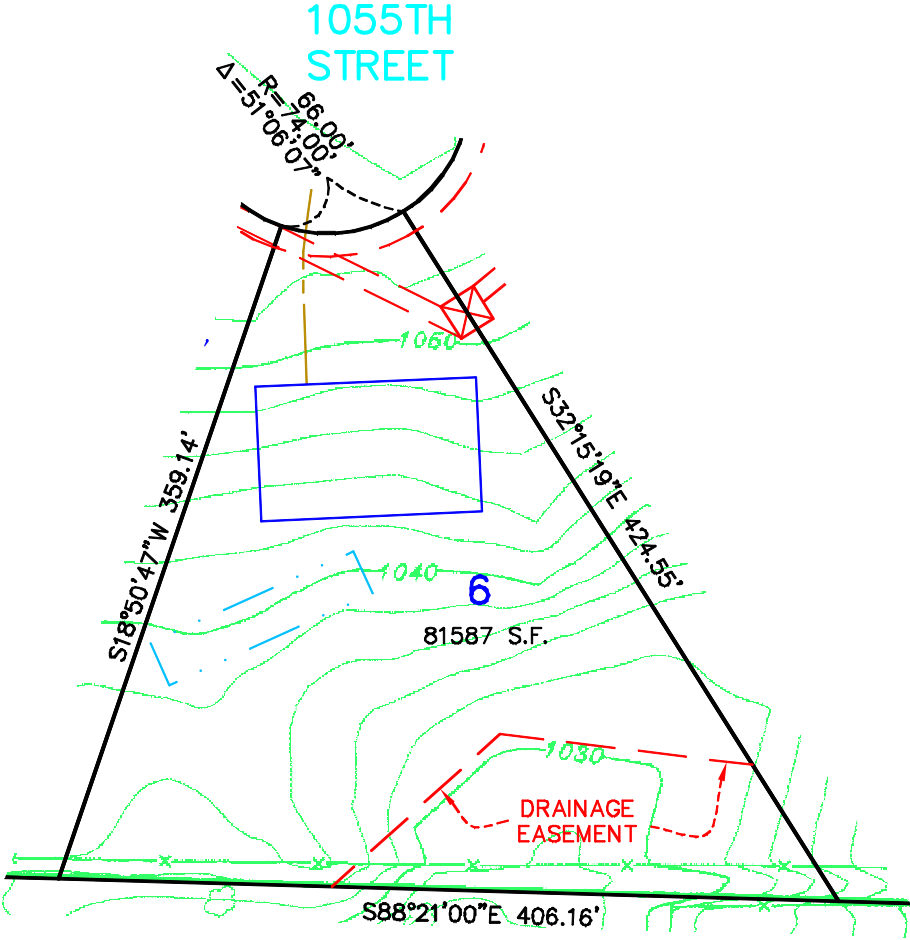
CENTERLINE OF PROPOSED DRIVEWAY



COMMON WELL EASEMENT WITH WATER LINE EASEMENT




Scale 1" = 100'



| | | | | | | | | |
|--------------|-----------------|-------------|----------|--------------|-----------|---------|-----------|----------|
| SHEET 1 OF 1 | FILE NO. FOLDER | PROJECT NO. | CAD FILE | CONTROL FILE | BOOK/PAGE | DATE | REVISIONS | DRAWN BY |
| | 20130511 | 20130511 | 20130511 | 20130511 | 614/20 | 2/24/03 | | CMH |

**SKETCH OF
LOT 6, DIAMOND BLUFF
FOR: DIAMOND BLUFF INVESTMENTS, L.L.C.**



James R. Hill, Inc.
 PLANNERS / ENGINEERS / SURVEYORS
 2500 W. Cty. Rd. 42, Suite 120, Burnsville, MN 55337
 PHONE: (952)890-8044 FAX: (952)890-6244