



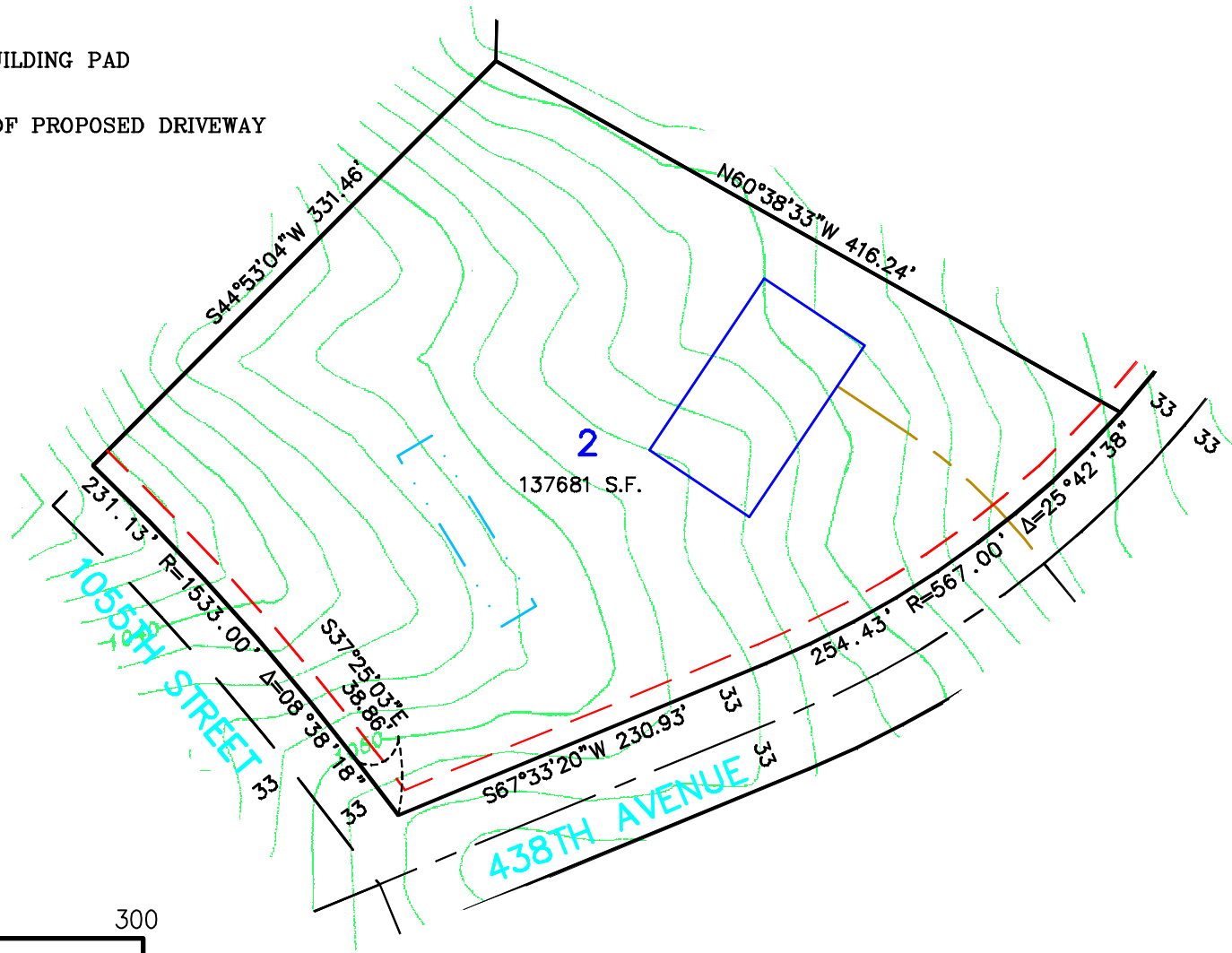
PROPOSED DRAIN FIELD



PROPOSED BUILDING PAD

--- CENTERLINE OF PROPOSED DRIVEWAY


Not for construction purposes. Refer to the recorded plat of DIAMOND BLUFF for final plat information.



Scale 1" = 100'

DRAWN BY	CMH
DATE	2/24/03
REVISIONS	
BOOK/PAGE	614/20
CONTROL FILE	20130C
CAD FILE	20130S10
PROJECT NO.	20130
FILE NO. FOLDER	
SHEET	1 OF 1

SKETCH OF
LOT 2, DIAMOND BLUFF
FOR: DIAMOND BLUFF INVESTMENTS, L.L.C.



James R. Hill, Inc.
 PLANNERS / ENGINEERS / SURVEYORS
 2500 W. Cty. Rn. 42, Suite 120, Burnsville, MN 55337
 PHONE: (952)890-6044 FAX: (952)890-8244